

Blue bag		Oyster associates					November
Bag #	Fish	shrimp	crabs	gastropods	flatworms	Other	Total n
	1						0
	2					1	1
	3						0
	4					6	6
	5						0
	6	2					2
	7						0
	8						0
	9					3	3
	10					8	8
	11						0
	12						0
	13					1	1
	14	1					1
	15	1					1
	16						0
	17						0
	18						0
	19	2					2
	20						0
	21						0
	22		1				1
	23	1					1
	24	1			1	1	3
	25					1	1
	26	1					1
	27			1			1
	28						0
	29						0
N							33
Min							0.00
Max							8.00
Mean							1.14
SD							1.87
Green bag		Oyster associates					November
Bag #	Fish	shrimp	crabs	gastropods	flatworms	Other	Total n
	31		1				1
	32						0
	33						0
	34					5	5
	35						0
	36						0
	37	1				5	6
	38			1			1
	39						0
	40					4	4
	41						0
	42	2					2

	43								
	44	1	1					2	
	45	1		1				2	
	46							0	
	47							0	
	48			1				1	
	49			1				1	
	50							0	
	51		1					1	
	52	2						2	
	53			2				2	
	54						1	1	
	55	1						1	
	56	1						1	
	57	1						1	
	58							0	
	59							0	
	N								34
	Min								0.00
	Max								6.00
	Mean								1.21
	SD								1.55

Fish	n Apr shrimp	Oyster associates				April Total n	Fish	n Nov17 shrimp
		crabs	gastropods	flatworms	Other			
					1	1	1	2
						0		
						0		
2	1					3	1	
	1	2		1		4	1	
				5		5		
					5	5		
1		1	25			27		
						0		
5	2	12				19		
					1	1		
3	3	14	3		8	31	11	4
1		3				4		
3		4				7	5	
						0		2
						0		
1						1		
2		1	5	10		18		
15			1		1	17		
2		3				5	1	
						0	1	
		2				2	3	
1		1				2	3	5
	6	2	1	1	2	12		
1		4	3	1		9	3	
2		3		1		6		
						0		
10		2		2		14		
						28		

0.00

31.00

6.89

8.53

Fish	n Apr shrimp	Oyster associates				April Total n	Fish	n Nov 17 shrimp
		crabs	gastropods	flatworms	Other			
		1			5	6	1	7
						0	2	
						0		
						0	1	
	2					2	1	1
				1		1		3
					10	10		
					7	7	1	
						0		
6		9				15		
					2	2		
5	1	18	1	1	9	35	10	3

1		3		1		5		
6		3			1	10		7
						0		
						0		
2						2		
		2	10	10		22		
4	5	4				13		
2		2		1		5	5	1
						0	0	
1		6				7	3	1
3		2				5	9	8
	3	1	2	1	1	8		
2	2	1	2			7	2	
1		4		3		8	1	
1						1		
6						6		
						177		

0.00

35.00

6.32

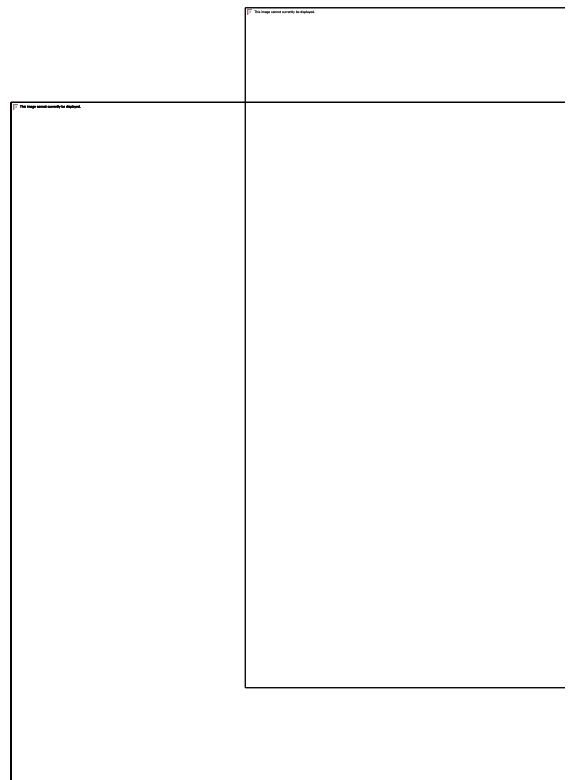
7.75

Oyster associates				Nov-17
crabs	gastropods	flatworms	Other	Total n
1		23		27
		6		6
		6		6
2			3	6
				1
			24	24
			2	2
	10		3	13
			12	12
			2	2
6	1	5	2	29
4		5		14
		2	1	5
			7	7
2	48			51
				1
2				5
4				12
1	2	2	10	18
1				1
				20

1.00
51.00
12.10
12.59

Oyster associates				Nov-17
crabs	gastropods	flatworms	Other	Total n
2	0	1	1	12
		4		6
3				3
2				3
2				4
			3	6
			2	2
	15		4	20
			14	14
			2	2
6		1	3	23

Rock oysters	Nov Tally	Apr Tally
0	14	7
1	9	3
2	2	2
3	2	1
4	0	2
5	0	3
6-9	2	3
10-15	0	2
16-20	0	3
21-25	0	0
26-30	0	1
>30	0	1



	Nov-16	Apr-17
Rock oyster basket	1.14	6.89
Community basket	1.21	6.32

Community oysters	Nov Tally	Apr Tally
0	11	7
1	9	2
2	5	3

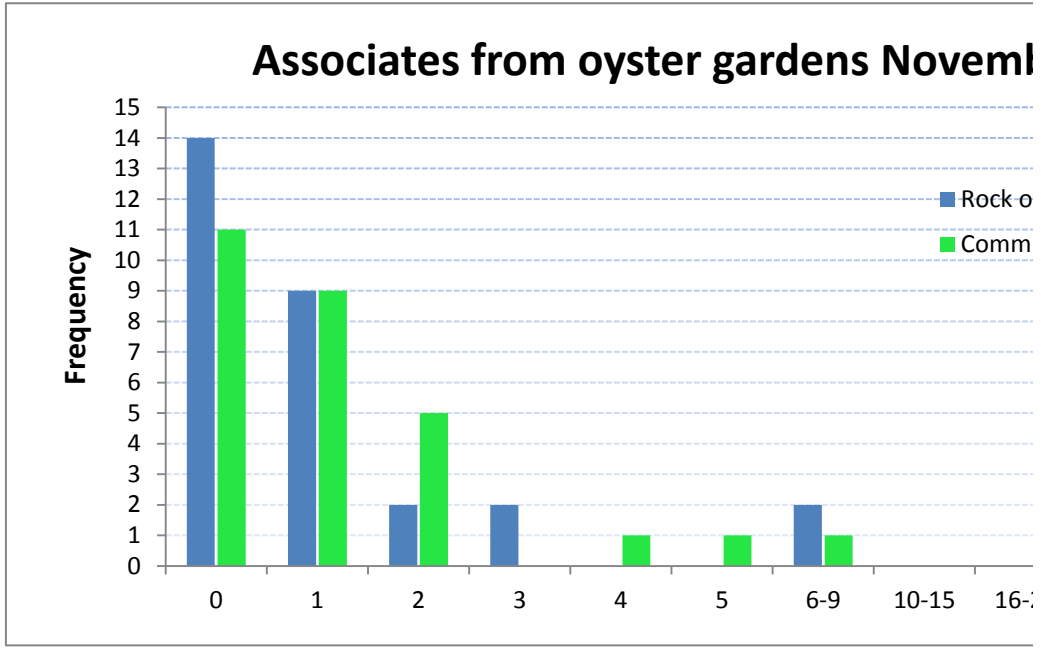
	2		1	10
			7	7
1	380			387
				0
8		1		13
7				24
				0
1	1		20	24
				1
				561

	3	0	0
	4	1	0
	5	1	3
6-9		1	7
10-15		0	4
16-20		0	0
21-25		0	1
26-30		0	0
>30		0	1

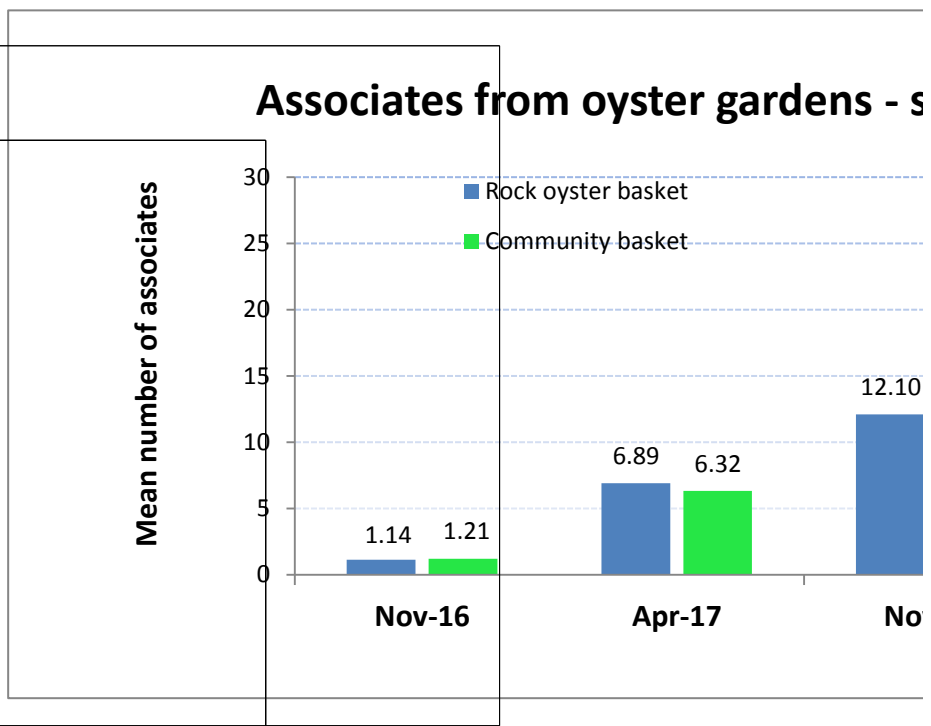
0.00
387.00
28.05
84.88

Nov-17
tally

0
3
2
0
0
2
4
4
1
1
2
2
1



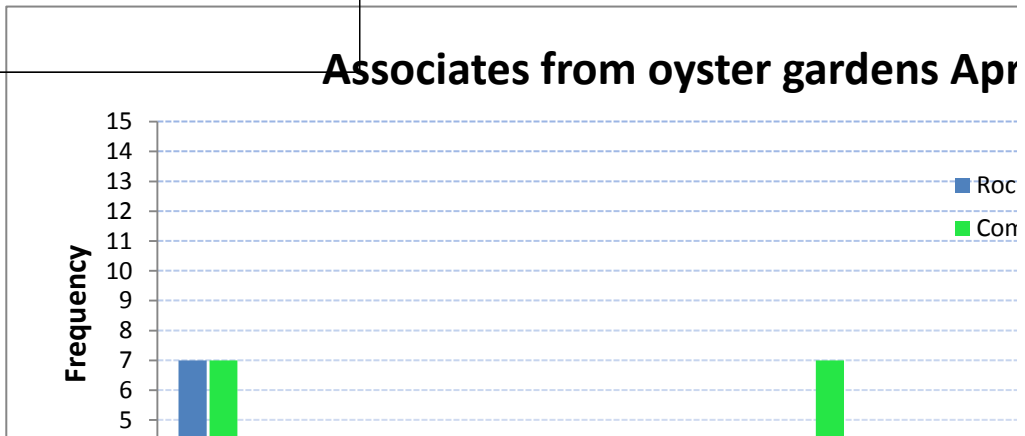
Associates from oyster gardens - s



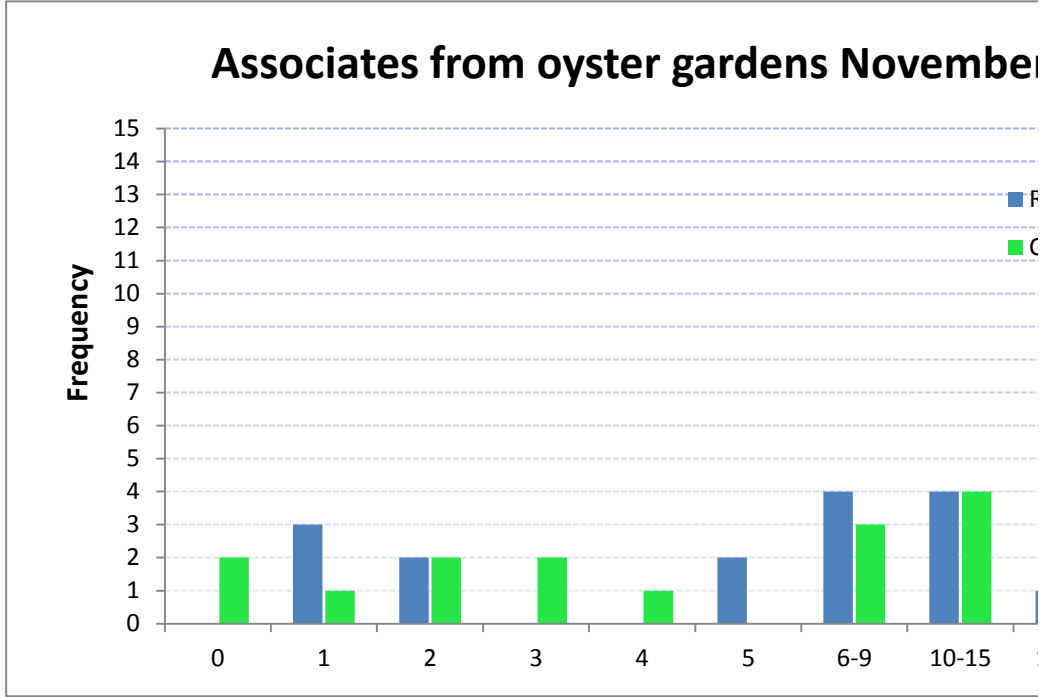
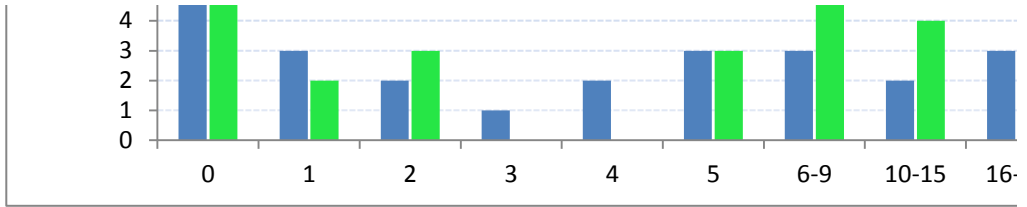
Associates from oyster gardens Apr

Nov-17
12.10
28.05

2
1
2



2
1
0
3
4
1
3
0
1



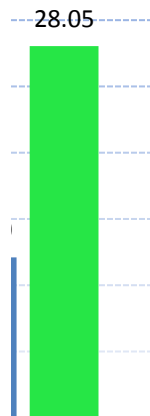
ber 2016

ysters Nov 2016

unity Oysters Nov 2016

20 21-25 26-30 >30

summary

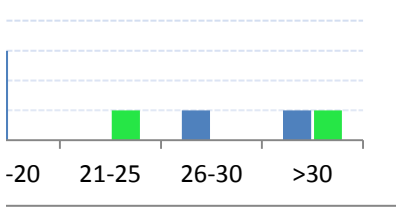


Nov-17

ril 2017

rk oysters Apr 2017

nmunity Oysters Apr 2017



r 2017

Rock oysters Nov 2017

Community Oysters Nov 2017

